



# **SUPER TWISTING SLIDING-MODE CONTROL OF GRID-TIED QUASI-Z-SOURCE INVERTERS UNDER DISTORTED GRID VOLTAGE**

**MrsLJayavani<sup>1</sup>,Srivani<sup>2</sup>,Archana<sup>3</sup>,A.DevikaMadhavi<sup>4</sup>**

<sup>1</sup>AssistantProfessor,Dept.ofEEE,MallaReddyEngineeringCollegeforWomens,Hyderabad,

<sup>2,3,4</sup>ResearchStudent,Dept.ofEEE,MallaReddyEngineeringCollegeforWomens,Hyderabad

## **Abstract**

The quasi-Z-source inverter (qZSI) with the proposed battery operation can balance the turbulence of photovoltaic (PV) power injected to the load as in the existing topology, but overcomes the limitations in the rating, size and life of battery. This paper proposes a new topology that is optimized for off grid applications. The characteristics of the proposed idea are analyzed in detail. In the proposed model, voltage boost and inversion are integrated in a single-stage inverter. A prototype is built to experiment the proposed circuit and to test the control methods. The results obtained are verified with the theoretical analysis and proves the effectiveness of the proposed control of the inverter's input and output power and battery power. The PV panel and energy-stored qZSI, setup used in the experiment demonstrates three operating modes that make it suitable for off grid applications.

## **1. Introduction**

The rapidly increasing environmental degradation across the globe is posing a major challenge to develop commercially feasible alternative sources of electrical energy generation. Thus, a huge research effort is being conducted worldwide to come up with a solution in developing an environmentally benign and long-term sustainable solution in electric power generation. The major players in renewable energy generation are photovoltaic (PV), wind farms, fuel cell, and biomass.

These distributed power generation sources are widely accepted for micro grid applications. However, the reliability of the micro grid relies upon the interfacing power converter. Thus the proper power regulation from the



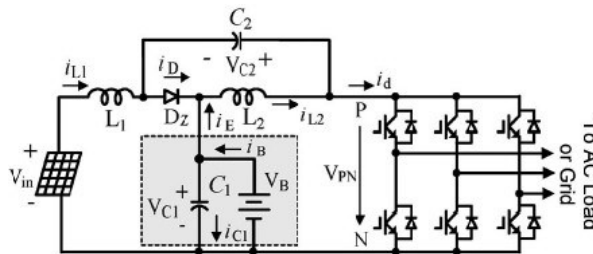
interfacing power converter will ensure a stable and reliable micro grid system. Thus this paper focuses on the proposal of a new class of interfacing inverter, the quasi-Z-source inverter (qZSI) for off-grid applications.

There are several power converter topologies employed in PV systems; each of them with different characteristics: two-stage or single-stage, with transformer or transformer less, and with a two-level or multilevel inverter. Single-stage inverters are more desirable when compared to the two-stage models due to their compactness, low cost, and reliability. However, the conventional inverter has to be oversized to cope with the wide PV array voltage changes because a PV panel presents low output voltage with a wide range of variation based on irradiation and temperature, usually at a range of 1:2. To interface the low voltage output of an inverter to the grid, a bulky low-frequency transformer is necessary at the cost of a large size, decrease in efficiency, loud acoustic noise, and high cost. The two-stage inverter applies a boost dc/dc converter instead of a transformer in order to minimize the required KVA rating of the inverter and boost the wide range of voltage to a constant desired value. Unfortunately, the switch in the dc/dc converter becomes the cost and efficiency killer of the system. For safety reasons, some PV systems have a galvanic isolation, either in the dc/dc boost converter using a high-frequency transformer, or in the ac output side of a line frequency transformer. Both of these added galvanic isolations increase the cost and size of the whole system, and decrease the overall efficiency. Transformer less topology is deserving attention because of its increased efficiency, reduced size, weight and price for the PV system. The Z-source inverter (ZSI), as a single-stage power converter with a step-up/down function, allows a wide range of PV voltages, and has been reported in applications in PV systems. It can handle the PV dc voltage variation in a wide range without overrating the inverter, at the same time it can carry out voltage boost and inversion simultaneously in a single power conversion stage, thus minimizing system cost and reducing component count and cost, and improving the reliability. Recently proposed quasi Z-source inverters have some new attractive advantages that will make the PV system much simpler and lower its cost because it: 1) draws a constant current from the PV panel, so no additional capacitor for filtering is needed;

2) features lower component (capacitor) rating; and 3) reduces switching ripple to the PV panels.

In the existing topology, the energy-stored qZSI shown in Fig. 1 has the battery connected in parallel with the capacitor C<sub>1</sub>.

Fig. 1 Existing energy-stored qZSI for PV power generation.



## 2. New qZSI-Battery topology

Fig. 1 shows the existing energy-stored qZSI topology where the battery is connected in parallel with the capacitor C<sub>1</sub>, whereas in the proposed the battery is connected as shown in Fig. 2 leading to a new topology. The proposed model since optimized for direct load applications, it primarily focuses on the uninterrupted power supply to the connected load. It has three different cases in doing so, they are: 1) PV panel generates the power required to support the load and charge the battery; 2) if PV panel power becomes insufficient then the battery supports the load. 3) if both PV panel power and battery power become insufficient then the load is supplied with the AC mains.

Thus the proposed model achieves in providing continuous power the connected load at the same time keeps in check the battery voltage so that it doesn't go beyond the threshold limit which causes deterioration in recharging ability of the battery.

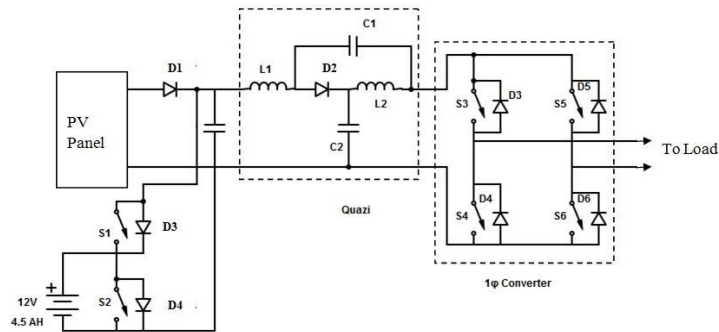


Fig.2 Optimized energy-stored qZSI for PV off-grid applications.

### 3. Operating modes of qZSI

The two modes of operation of a quasi-Z-source inverter are:

- (1) Active mode
- (2) Shoot-through mode

#### 3.1 Active mode

In the non-shoot-through mode or active mode, the switching pattern for the QZSI is similar to that of Voltage Source Inverter (VSI). The input dc voltage is available as DC link voltage input to the inverter, which makes the QZSI behave similar to a VSI in this mode.

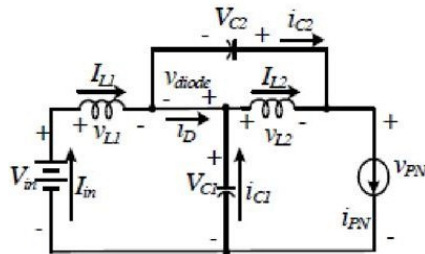


Fig.3. Equivalent circuit of QZSI in Active mode

#### 3.2 Shoot-through mode

In this mode, switches of the same phase in the inverter bridge are switched on simultaneously for a very short duration. The source however isn't short circuited when attempted to do so because of the presence of LC network (quasi), that boosts the output voltage. The DC link voltage during the shoot through states, is boosted by a boost factor, whose value depends on the shoot-through duty ratio for a given modulation index.

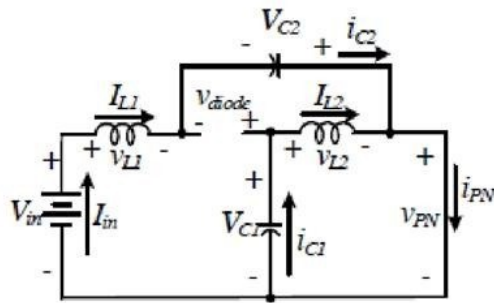


Fig.4. Equivalent circuit of QZSI in Shoot through mode

## 4. Design of quasiregulator

### 4.1 Design of Inductor

In active mode, the capacitor voltage is always equal to the input voltage. So there is no voltage across the inductor, whereas in the shoot through mode, the inductor current increases linearly and the voltage across the inductor is equal to the voltage across the capacitor. The average current through the inductor is given by,

$$I_L = P/V_{dc} \quad (1) \quad (3.11)$$

Where  $P$  is the total power and  $V_{dc}$  is the input voltage.

The maximum current occurs through the inductor when the maximum shoot-through happens, that results in maximum ripple current. In order to limit the allowable ripple current within 4A and the maximum current within 10.67A the design was made that only 30% current ripple occur through the inductors during maximum power operation

For a switching frequency of 10kHz, the average capacitor voltage is,

$$V_C = (1 - T_O/T) * V_{dc} / (1 - 2T_O/T) \quad (2) \quad (3.12)$$

Substituting the values in the inductance equation, the average capacitor voltage would be 300V. So the inductance must be no less than

$$L_1 = L_2 = (0.1 * 10 * 300 / 10.67) = 3 \text{ mH}$$

### 4.2 Design of Capacitor

The main function of the capacitor is to absorb the voltage ripple and maintain a fairly constant voltage. During shoot-through the capacitor charges the inductors and the current through the capacitor equals the current in the inductor. Therefore the voltage ripple across the capacitor is,

$$V_C = [I_L(\text{avg}) T_S] * (1/C) \quad (3)$$

The capacitor voltage ripple is 0.17%.

Substituting the above values in the equation, the required capacitance was found to be

$$C = 6.67 * 0.1 * 10 (300 * 0.0017) = 3.401$$



Therefore the impedance network of the Quasi Z-Source inverter consists of inductors of 3mH and capacitors of 1000μF.

## 5. Control strategy

The QZSI configuration has six active vectors when the DC voltage is impressed across the load and two zero vectors when the load terminals are shorted through either lower or upper two switches. These switching states and their combinations have been spawned many PWM control schemes. Sinusoidal PWM is the most commonly used PWM technique in the VSI. On the other hand, QZSI has additional zero vectors or shoot through switching states that are forbidden in traditional VSI. In order to boost the output voltage, the shoot through states should always be followed by active state. This requirement may be met by the complementary operations of the switches within a leg. The simple boost control method used here employs two constant voltage envelopes which are compared with the sine carrier wave. Whenever the magnitude of sine carrier wave becomes greater than or equal to the positive constant magnitude envelope (or) lesser than or equal to the negative constant magnitude envelope, pulses are generated which control the shoot through duty ratio  $D_o$ . These serve as the firing signals for the switches in the inverter. This control technique has shoot through states spread uniformly which makes output free of frequency ripples.

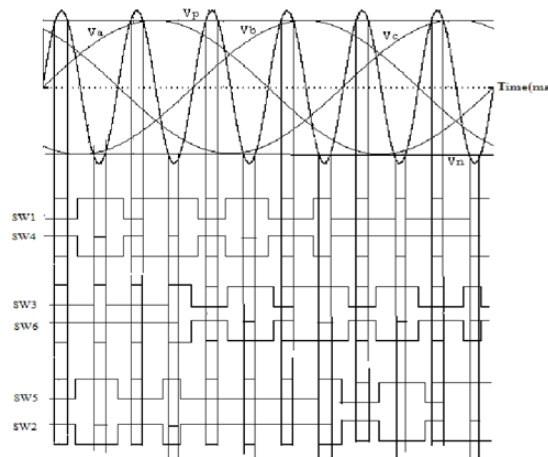


Fig.5. Schematic of Sine PWM

The sine wave carrier PWM provides high shoot through duty ratio than the triangular wave carrier, for the same modulation index, that results in reduced voltage stress on the device and gives high peak output voltage. The use of sine carriers suppresses the harmonics that results in reduction of THD in output voltage.

$$G = \frac{\text{Output peak AC voltage}}{\text{DC link voltage}} \quad (4)$$

$$V_{\text{Link}} = \frac{V_s}{2} \quad (5)$$

$$V_{\text{ac}} = MB * \frac{V_s}{2} \quad (6)$$

Where  $V_{\text{Link}}$  is the DC link voltage of inverter  
 $V_{\text{ac}}$  is the peak AC output voltage  
 $B$  is the boost factor  
 $M$  is modulation index


$$B = \frac{1}{T_1 - T_0} = \frac{1}{1 - 2\frac{T_0}{T}} = \frac{1}{1 - 2D_0} \quad (7)$$
$$D_0 = \frac{T_0}{T} = 1 - \frac{2}{\pi} \sin^{-1} M \quad (8)$$

$$B = \frac{\pi}{4\sin^{-1} M - \pi} \quad (9)$$

$$G = \frac{\pi M}{4 \sin^{-1} M - \pi} \quad (10)$$

## 6. Simulationresult

The diagram illustrates the proposed system architecture. It features a PIC 16F887 microcontroller that controls a MOSFET Driver. The MOSFET Driver is connected to a 1φ converter, which is part of a Quasi-Resonant (QR) circuit. The QR circuit is also connected to a Buck Boost converter, which is powered by a Battery. The 1φ converter is connected to a Step up transformer, which is in turn connected to an AC load and an AC supply. The AC supply is also connected to the MOSFET Driver and the 1φ converter. The PIC 16F887 is powered by  $V_{bat}$ ,  $V_L$ , and  $V_{dc}$ .

Page | 642



For the purpose of simulation the PV panel was replaced by DC source.

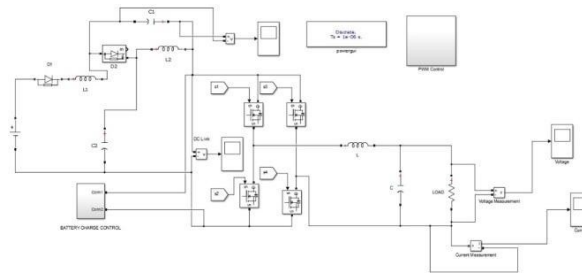


Fig.7 Simulation Block Diagram

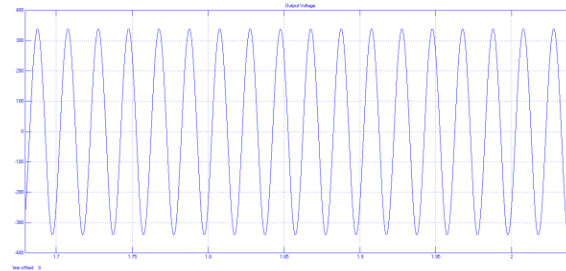


Fig.8 Output voltage waveform

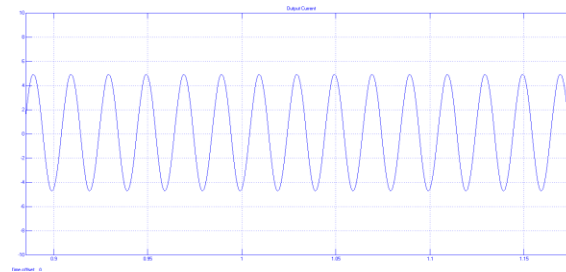


Fig.9 Output current waveform

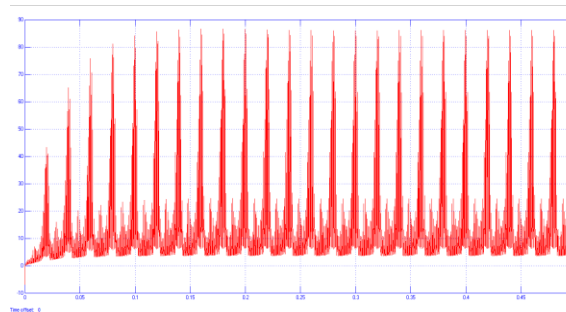


Fig.10 D.C. link Voltage



## 7. Conclusion

This paper proposes a new topology for energy stored Quasi-Z-source Inverter that is more suitable for Photovoltaic power systems that are directly connected to load. The three operating modes of the proposed model make sure that the power supply to the load is uninterrupted and satisfies the load requirement. A prototype for the proposed model has been developed and its simulation and experimental results shown in this paper clearly demonstrate the effectiveness of this topology for PV power systems directly connected to the load.

## References

- [1] Miaosen Shen, Alan Joseph, Jin Wang, Peng F.Z and Donald J. Adam, "Comparison of Traditional inverter and Z-source inverter", IEEE Trans. Power Electron., pp. 1692-1698 2005.
- [2] Y. Huang, M.S. Shen, F.Z. Peng, J. Wang, "Z-Source inverter for residential photovoltaic systems", IEEE Trans. on Power Electron., vol. 21, no. 6, pp. 1776-1782, November 2006.
- [3] Fang Zheng Peng, "Z-Source Inverter", IEEE Transactions on Industry Applications, Vol. 39, No. 2, pp. 504-510, March/April 2003.
- [4] Yuan Li, Anderson, J., Peng, F.Z., Dichen Liu, "Quasi-Z-Source Inverter for Photovoltaic Power Generation Systems", Applied Power Electronics Conference and Exposition, 2009. APEC 2009. Twenty-Fourth Annual IEEE.
- [5] Yuan Li, Shuai Jiang, Cintron-Rivera and Fang Zheng Peng, "Modeling and Control of Quasi-Z-Source Inverter for Distributed Generation Applications", IEEE Transactions on Industrial Electronics, Vol. 60, No. 4, pp. 1532-1541, 2013.
- [6] Baoming Ge, Fang Zheng Peng and Quen Li, "An Energy-Stored Quasi-Z-Source Inverter for Application to Photovoltaic Power System", IEEE Transactions on Industrial Electronics, Vol. 60, No. 10, pp. 4468-4480, October 2013.
- [7] Poh Chiang Loh, D.M. Vilathgamuwa, Y.S. Lai, G.T. Chua and Y.W. Li, "Pulse-width modulation of Z-source inverters", IEEE Transactions on Power Electronics, Vol. 20, pp. 1346-1355, November 2005.